

EQUICURE C : overview

What is the EQUICURE C ?

EQUICURE C is a care cream for horse's injuries.

The formulation of **EQUICURE C** is single: it calls upon completely innovative active ingredients.

These active principles are essential oils of first qualities with soothing and painkilling properties and Neptamine® an organo-mineral complex from a seashell.



When used EQUICURE C ?

EQUICURE C is used on all types of wounds: burn, tear, laceration, girth galls, saddle sores,... **EQUICURE C** is each time of one impressive effectiveness.

What are Equicure C's properties ?

- **EQUICURE C** supports the healing of the wounds while allowing to the epidermisation, the granulation tissue formation and the contraction to happen in an optimal way.
- **EQUICURE C** stimulates the regrowth of the hair to its original colour avoiding the white ones.
- **EQUICURE C** decreases the risk of production of an exuberant granulation tissue (proud flesh).

Veterinary surgeons won over
What attracted the veterinary surgeons that are using **EQUICURE C** is the **practical** and the **easy way to use it** combined with its large effectiveness. The application of this cream is sufficient by itself and doesn't need to use bandages or other products against proud flesh. Also, the animal tolerates perfectly the application of **EQUICURE C** because it is painless.

What are advantages of EQUICURE C ?

- An easy product to use, **EQUICURE C** is painless for the animal.
- A practical product, **EQUICURE C** doesn't require neither bandages to show effectiveness nor other products to

decrease the risk of exuberant granulation tissue.

- A full product, **EQUICURE C** speaks for itself. The risks of infection and exuberant granulation production are limited even without the use of any other products.
- A non-doping product, **EQUICURE C** does not turn the animal positive during an anti-doping control.

How to use EQUICURE C ?

Two daily applications on a cleaned and dried wound until it is healed.

The cream can be applied with a brush and a very fine layer of **EQUICURE C** is enough.

EQUICURE C : Clinic case

EQUICURE C proved its effectiveness on many surface or deep injuries and on various localizations.

Scratch on the side caused by repetitive friction.



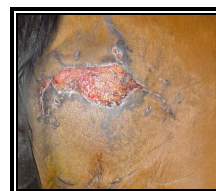
Before using EQUICURE C



After 6 weeks of use

Tear on the buttock caused during a transport. One necrotic zone appeared with the withdrawal of the sutures points.

Note the hair growth on the wounds (red arrows).



1st day of application



at 28 days



at the end

Distributed by :